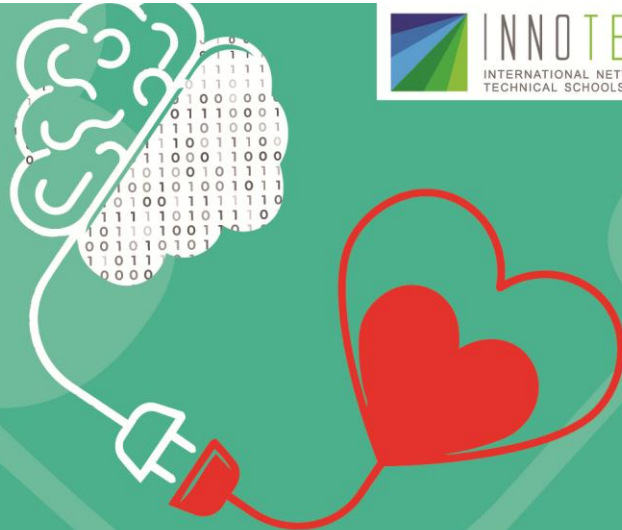


DIGITAL MINDS, human hearts

INNOTECS Study Visit & General Assembly

Aveiro, 17–19 May



info pack



Aveiro is in the Centro Region of Portugal, 70 km to the south of Porto and 60 km north of Coimbra. The city has a population of approximately 80,000 inhabitants, where 15,000 are students at University of Aveiro, one of the most important Portuguese Universities.

Porto

Aveiro!

Coimbra

Lisboa

The nearest airport is Porto – Francisco Sá Carneiro Airport, located about 80 km from Aveiro.

Coaches that run directly from Porto Airport to Aveiro may be the simplest option.

Bus

You can use FlixBus [FlixBus: Affordable Bus Tickets](#) or Rede Expressos [Rede Expressos | Coach tickets from 2,95€](#), both of which offer direct connections from Porto Airport to Aveiro.

The bus stops are located on the right-hand side when you exit the arrivals terminal.

Train

You can also travel by train via CP – Comboios de Portugal (Portuguese Railways): [CP - Comboios de Portugal | Online Train Tickets](#)

From Porto Airport to Campanhã Railway Station by Metro

Inside the airport, follow the signs for Underground (M = Metro). Go down to floor –1 and walk straight ahead until the end of the corridor, where you will find the ticket machines and the metro platforms.

Buy a metro ticket at the vending machines. The fare is about €1.95, plus €0.50 for the reusable card (you keep this card and recharge it every time you use the metro).

Take the purple line (Line E) — it is the only metro line that serves the airport.

You may see two possible destinations on the trains:

- “Estádio do Dragão” – you can stay on this train until Campanhã
- “Trindade” – take this train and get off at Trindade (about 35 minutes outside peak hours), then change trains to Campanhã Station.

If you go via Trindade, leave the train and wait on the platform for any train in the direction of “Estádio do Dragão”, as all of them stop at Campanhã. If you are seated facing the direction of travel, use the doors on your left to reach the platform.

Before boarding the metro, remember to validate your ticket at the yellow validation machines.



When you get off at Campanhã Metro Station, follow the signs to Campanhã Railway Station, which is a short walk away. You can buy either a **U (Urban)**, **IC (Intercidades)** or **AP (Alfa Pendular)** train to Aveiro. U trains

are the cheapest and perfectly adequate for this one-hour journey; the other options are much more expensive and usually not worth the extra cost.

Alternative options

There are Ubers in both Porto and Aveiro. You can easily reach Campanhã Railway Station by Uber from the airport.

You can also take an Uber directly to Aveiro, but this is much more expensive than the train, and the price varies significantly depending on time and demand (between 100€ and 150€).

Aveiro can also be reached via Lisbon Airport, with direct train connections from Lisbon Oriente Station (and also with FlixBus or Rede Expressos – see above).

From Lisbon Airport to Oriente Railway Station

Oriente is the main railway station in Lisbon for trains going to the north (Porto, Aveiro, Coimbra, etc.) and it is very easy to reach from the airport.

Option 1 – By Metro (Underground)

Inside the airport, follow the signs for Metro / Underground (M). The metro station is directly connected to the terminal.

1. Buy a ticket at the vending machines.
 - Buy a Viva Viagem card (€0.50) and load it with a zapping balance or a single journey (about €1.80).
2. Take the Red Line (Linha Vermelha) in the direction of São Sebastião.
3. Get off at Oriente Station — it is the third stop from the airport (about 5–7 minutes).
4. Before entering the metro, validate your ticket at the gates.
5. When you get off at Oriente, follow the signs for “Comboios / Trains” to reach the railway station.

The metro is fast, cheap and very convenient.

Option 2 – By Taxi or Uber

Taxis and Ubers are readily available outside the arrivals area.

- The journey from Lisbon Airport to Oriente Railway Station takes about 5–10 minutes, depending on traffic.
- The cost is usually moderate, and this is the easiest option if you have heavy luggage.

Simply tell the driver:

“Estação do Oriente” or “Gare do Oriente”.

You will be dropped directly in front of the station.

At Oriente Railway Station

Once inside Oriente Station, go to the CP (Comboios de Portugal) ticket counters or machines to buy your train ticket to Aveiro, Porto, or your next destination.

AVEIRO

Aveiro is a charming coastal city known as the “Venice of Portugal”. Part of the city is crossed by canals, with small bridges and colourful traditional boats called “moliceiros”.

Historically, these gondola-like boats were used to collect seaweed (moliço) from the lagoon for agricultural purposes. Today, they are beautifully decorated and used mainly for tourist tours along the canals.

Aveiro is also famous for its salt production, its Art Nouveau buildings, and its traditional sweet “ovos moles”.



A few kilometres from the Atlantic Ocean, which you can easily reach by car or by bus (and also by boat), the real charm of Aveiro lies on its coast, with its fantastic sandy beaches. This local coast is well known as Silver Coast, due to the beautiful and clean beaches.



The beach of Barra is known for its country's tallest lighthouse (the second-tallest in Europe and third in the world) and the beach of Costa Nova is known for its attractive candy-striped houses.



STUDY VISIT VENUE

The Study Visit will take place at the headquarters of AEVA – Escola Profissional de Aveiro:

R. Dr. Francisco Ferreira Neves – Barrocas

3800-510 Aveiro – Portugal

Google Maps:

<https://maps.app.goo.gl/XsimnKwXDho9vXjP8>

ACCOMMODATION

For project meetings we usually work with a partner hotel located in the city centre and within walking distance of AEVA. Special rates are available for participants.

When booking, please email the hotel directly and mention that you are attending INNOTECS Study Visit at AEVA.

Hotel As Américas

Website: www.hotelasamericas.com

Email: info@hotelasamericas.com

(Approximately 5 minutes' walk from AEVA)

The rates include buffet breakfast and a welcome drink (Port wine & ovos moles):

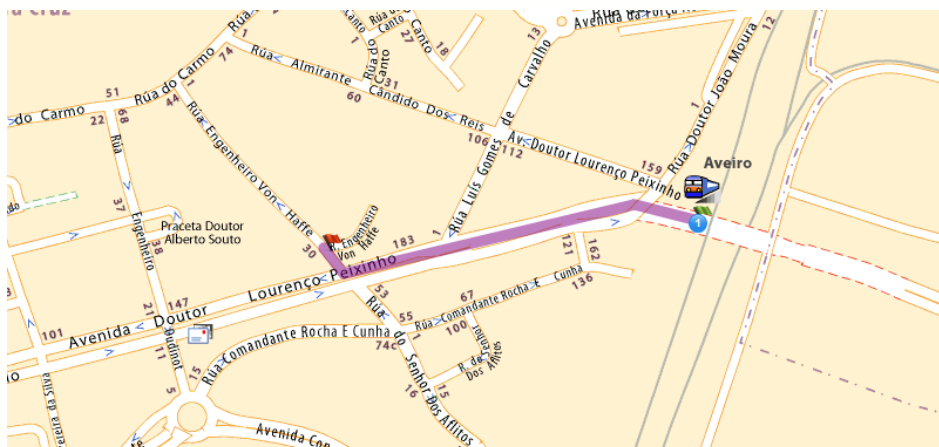
- **Single room: €86**
- **Double/Twin room: €108**
- **Triple room: €140**

Of course, there are many other accommodation options available in Aveiro, which you can find, for example, on www.booking.com

However, naturally, there are plenty of options. You can look at www.booking.com

How to get from the railway station in Aveiro to Hotel As Américas:

1 Aveiro Railway station and 2 Hotel As Américas



Departure: Vera Cruz, Estação de Caminhos de Ferro de Aveiro

Route plan in Aveiro



Continue along: Avenida Doutor Lourenço Peixinho

0.4 km

(0.4 km)



Turn right: Rua Engenheiro Von Haffe

(<0.1 km)

0.4 km 00h05

Destination: Vera Cruz, Rua Engenheiro Von Haffe

0.4 km 00h05

Welcome to Aveiro!